



Working in  
partnership with

**HS2**

---

# Calvert Green Parish Council – School Hill Batching Plant

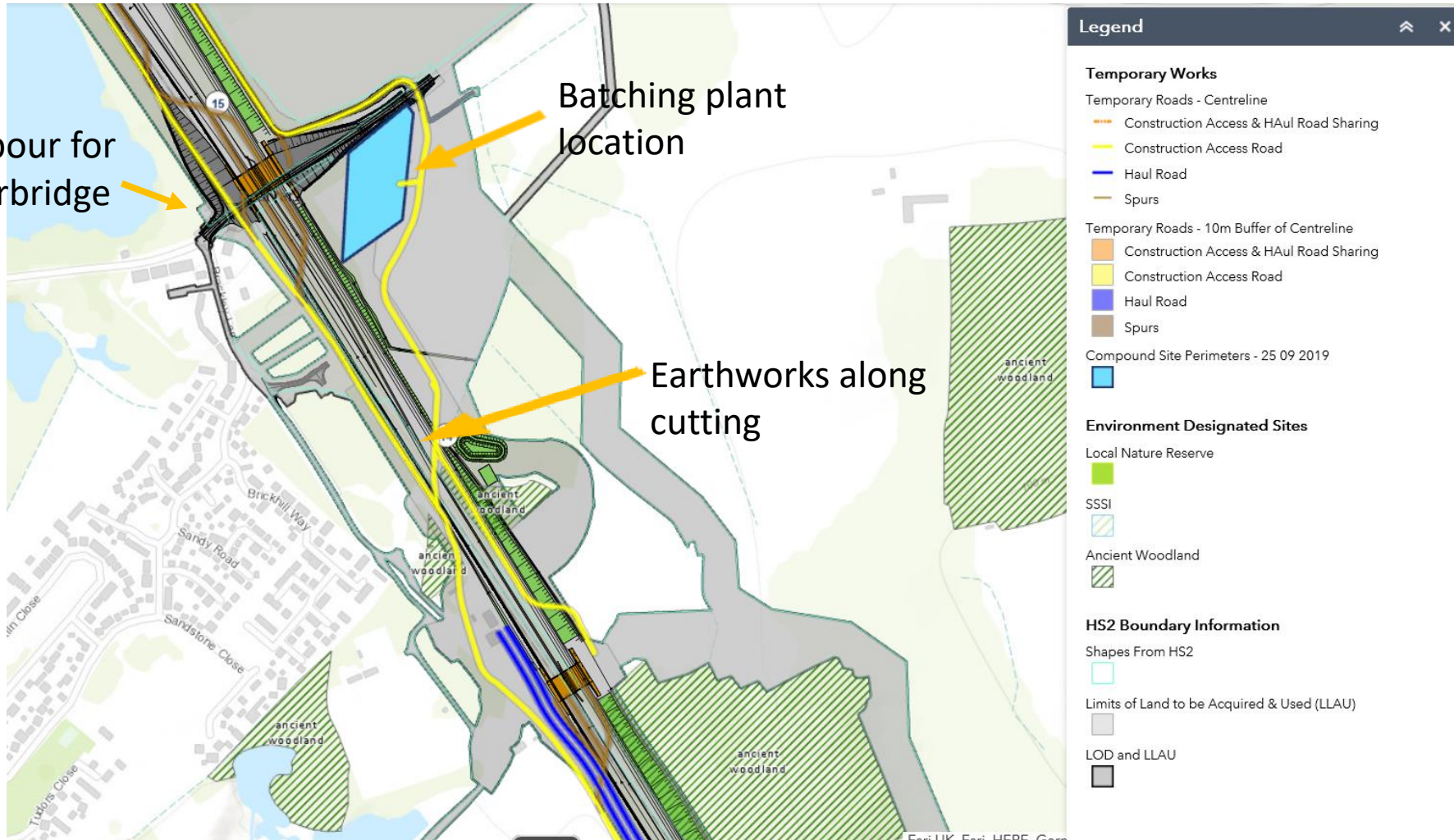
9<sup>th</sup> September 2020

# School Hill Green Overbridge and compound location

Piling and concrete pour for green overbridge

Batching plant location

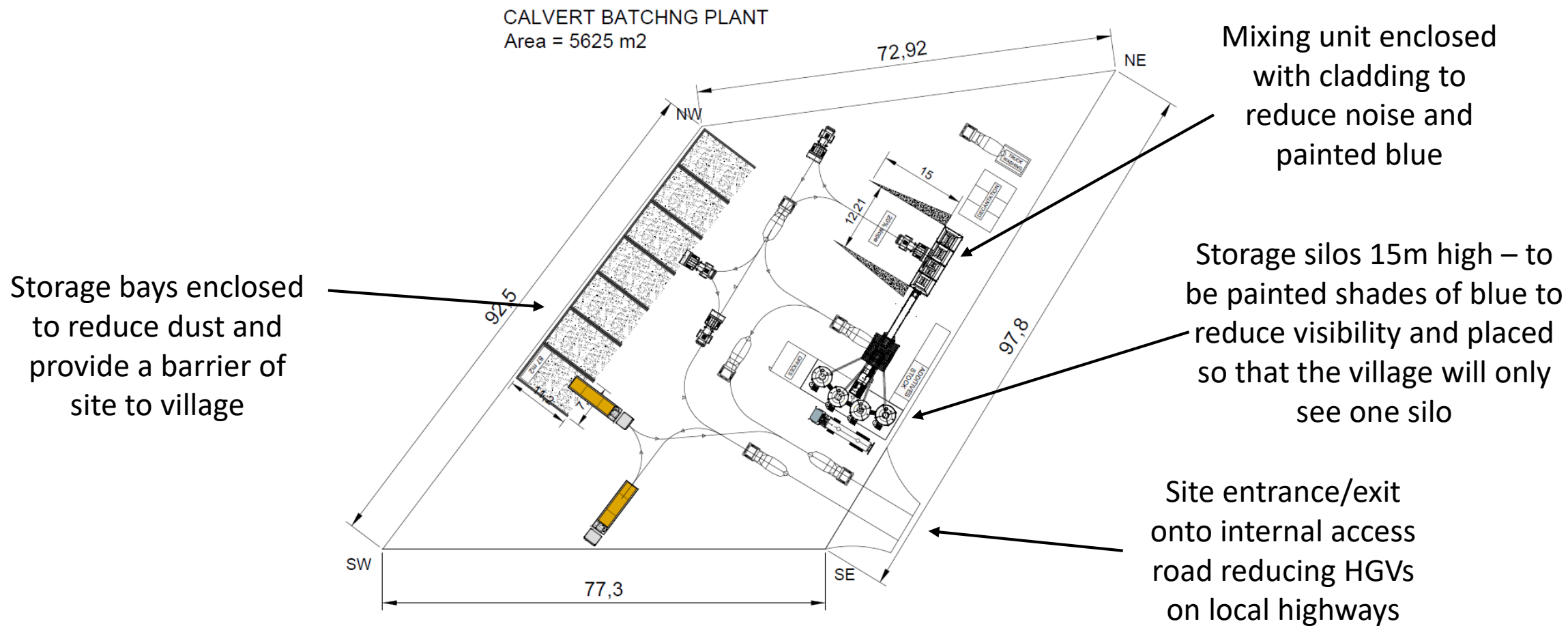
Earthworks along cutting



# Calvert batching plant location and photo of similar plant to be used



# Batching plant site plan







3d image of what the batching plant may look like in situ with view from School Hill bridge looking east from Calvert village



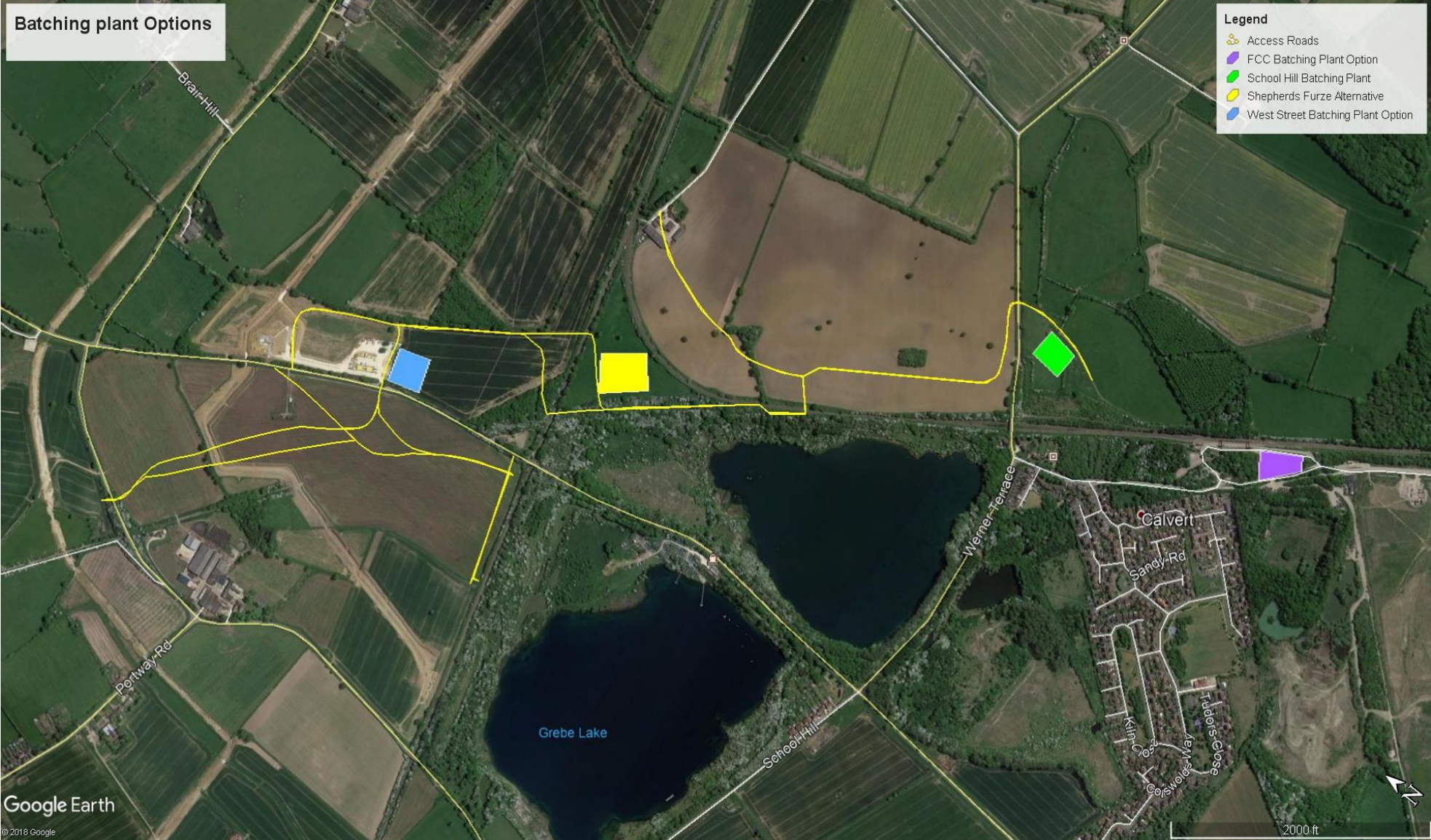


3d image of the batching plant looking east from Brackley Lane





# Location options considered



# Location Comparison

		Batching Plant at School Hill	Batching Plant at Shepherds Furze	Batching Plant at West Street	Batching Plant at existing FCC sidings area.
Programme (usage) (See Phasing plan)		All 3 Phases	Limited after Phase 2	Would need to move in Phase 2 to another location (on footprint of IMD)	No access in Phase 1
Delivery of Raw Materials		Road deliveries	Road requires additional work.	Road access	Serious limitations to Road deliveries.
Impact on Local Roads		Lowest of all options	Increased use of Public Roads.	Increased crossing of Public Roads	Vastly increased use of Public Roads
Concrete Delivery wagons (total km and CO2)		13,000km/8,000tCO2e	18,500km/12,000tCO2e	28,000km/17000tCO2e	57,000km/36,000tCO2e
Ecology	General	Close to a LWS (Calvert Railway Station) already mitigated	Near known Badger/Newt/Butterfly populations.	No known ecological issues.	No known ecological issues.
	Bats	Mitigation regarding operating hours/lighting/temporary flight lines is required.	Outside of the Bernwood Bat area.	Outside of the Bernwood Bat area.	Within Bernwood bat area, however not on a significant flight path.
Environmental	Flooding	Low Risk	Intermediate Risk	Low Risk	Low Risk
	Location (Noise and Visibility)	Visible to traffic on School Hill and ~175m from the nearest residence (Brackley Lane).	~500m from the nearest Road and ~800m from the nearest residence (Hodges Farm).	Visible to traffic on Gawcott Road (Perry Hill/Thame Road) and ~300m from the nearest residence (Portway Farm).	The Plant is Surrounded by high vegetation and will only be visible to a few residences, however it will be less than 100m from the nearest residence (Red Kite View).
Utility supply (electricity/water)		Available	Insufficient water.	Insufficient water	Assume existing adequate



# What are the expected noise levels?

- Attended noise monitoring was undertaken by Eiffage at a location with an operational concrete batching plant with a similar size and specification to the one proposed at Calvert
- Over a one hour period between 07.00 and 08.00 the average noise levels from the plant was 58.3 decibels at a distance of 20m from the plant.
- The ambient noise levels in Calvert during the day is between 56 and 63 decibels according the HS2 Environmental Statement
- The trigger level for noise insulation on HS2 for core hours is 75dB LAeq at the façade of a residents house
- Therefore, it is not expected that the average noise levels in this location will exceed ambient levels where the nearest resident on Brackley Lane is more than 100m distance from the plant



# What mitigation measures will be in place?

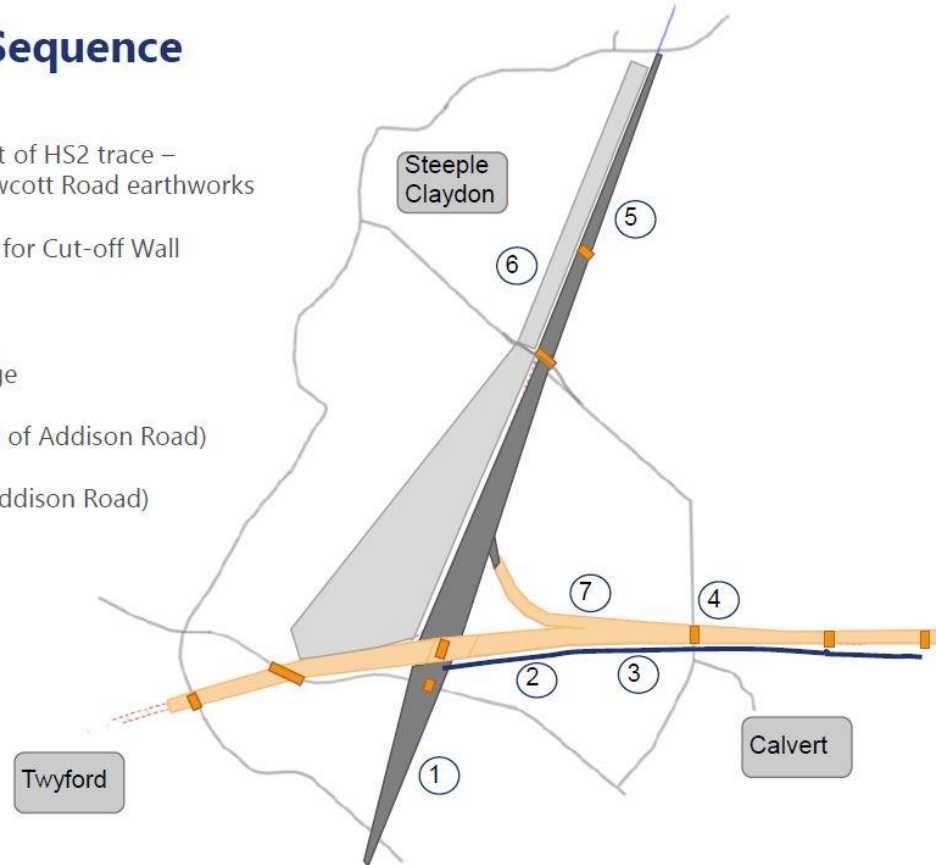
- Operation of the batching plant will comply with best practice for controlling noise, dust, lighting and visibility in the HS2 Code of Construction Practice
- Some specific measures that will be adopted for this batching plant include:
  - Facing mechanical plant away from the village with storage bays closer to the village to provide a barrier
  - Enclosed mechanical plant with cladding
  - Colouration of the silos and larger plant to blend in with skyline
  - Dust suppression system on site to reduce dust and enclosed storage bays
  - Light spill to be within 0.5lux to ensure no disturbance to bat flight lines across School Hill bridge
  - White noise reversing alarms to avoid beeping reverse alarms



# Concrete Programme - Calvert

## General Works Sequence Phase 3

- ✓ 1 – OXD Embankment (west of HS2 trace – continuation) including Gawcott Road earthworks
- ✓ 2 – Earthworks preparation for Cut-off Wall
- ✓ 3 – Cut-off Wall
- ✓ 4 – Calvert Road Overbridge
- ✓ 5 – OXD Embankment (east of Addison Road)
- ✓ 6 – IMD Platform (east of Addison Road)
- ✓ 7 – Calvert Cutting South

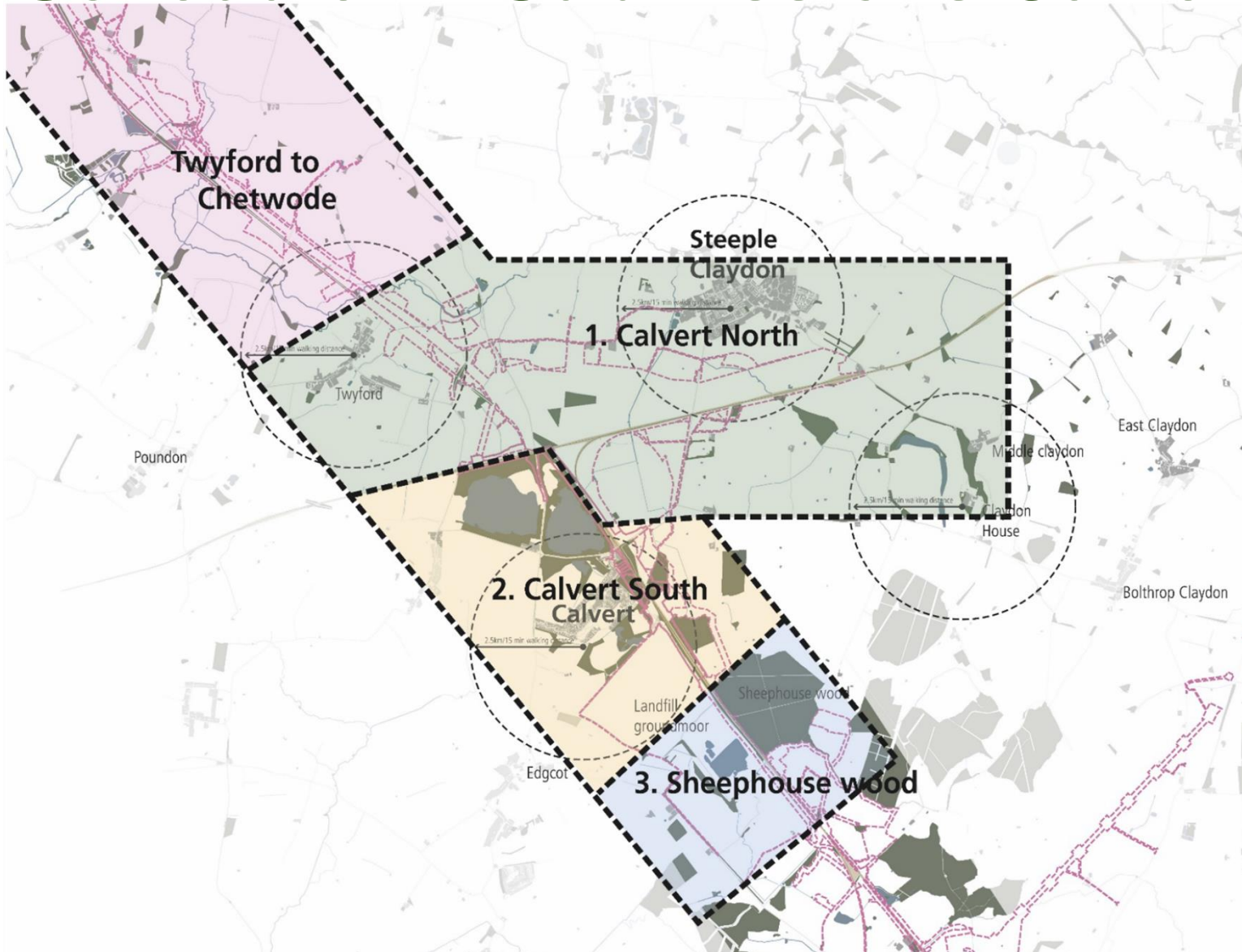


# Forward lookahead

- September 2020 – Advanced Work Notice – Early Works Notification
- September/October 2020 Joint Parishes meeting – Traffic Management and how we help Parishes
- October 2020 – Schedule 17 Plans and Submission Submitted (Indicative dates more on subsequent slide)
- Late October 2020 – Joint Parishes Meeting regarding Mitigation Fund
- Ongoing, regular meeting with Calvert Green Parish Council – How often?



# Schedule 17 Submissions Calvert Area (indicative dates)



1. Calvert North – Schedule 17 plans and specifications submission November 2020
2. Calvert South – Schedule 17 plans and specifications submission October 2020
3. Sheephouse Wood – Schedule 17 plans and specifications submission May 2021
4. Twyford to Chetwode – Schedule 17 plans and specifications submission November 2020

Note – these dates are based on the current programme

# Any other business

- What other information would you like from us?
- How would you like engagement to happen in the future?
  
- **Suggested regularity of meetings**
  - W/c 12 October
  - W/c 9 November
  - Monthly from then onwards